



AFINIA LABEL[®]

AFINIA L501 LABEL PRINTER



USER MANUAL

Version 1.0.0

Afinia Label

Copyright © 2017 Afinia Label. All rights reserved.

No part of this document may be photocopied, reproduced, or translated to another language without the prior written permission of Afinia.

Trademarks

Firefox is a trademark of the Mozilla Foundation.

Intel and Intel Core are trademarks of Intel Corporation in the U.S. and/or other countries.

Java and Oracle are registered trademarks of Oracle and/or its affiliates.

Microsoft, Windows, Windows Vista, and Windows Server are registered trademarks of Microsoft Corporation in the U.S.A. and/or other countries.

Edition

L501 Printer User Guide Edition 1.0.0. December 2017.

FCC

This device complies with Part 15 of the FCC rules. Operation is subject to the following two conditions: (1) this device may not cause harmful interference, and (2) this device must accept any interference received, including interference that may cause undesired operation.

Table of Contents

Setting up the Printer.....	5
In the Box	5
Parts of the Printer.....	6
The Control Panel.....	7
Unpacking, Setup, and Installation	8
Remove Tape and Foam	8
Connect Power.....	8
Set Date, Time, and Language	8
Install Printer Driver.....	9
USB Connection	10
Network Connection.....	10
Install Ink Cartridges	11
Align the Printheads.....	13
Using the Printer	14
Choosing Label Media	14
Loading the Printer	16
Unloading Media.....	16
Using the Control Panel	17
Help Screen	17
Home Screen.....	17
Setup	17
Cartridge Information	18
Network	19
Printing Labels.....	21
Printer Preferences	21
Adjusting Alignment for Printing	23
Selecting Media Size	24
Creating Custom Media Sizes	25
Selecting Media Type.....	25
Change Default Settings in Printer Driver.....	25
Canceling a Print	26
Out of Paper	26
Wrong Media	27
End of Roll	27
Shutting Down the Printer	27
Software Tools	28
Afinia L501 Toolbox	28
Afinia L501 Ink Cost Calculator	30
Add Afinia L501 Network Printer Utility	32
Printer Maintenance	33
Replacing an Ink Cartridge	33
Dye or Pigment Ink Cartridges	33
Changing Printheads	34
Purchasing Printheads.....	34
Guidelines for Preventative Maintenance	35

General dust and debris removal	35
Cutter Maintenance.....	35
Print Path Maintenance	36
Print Carriage Sensor Maintenance	36
Pinch Roller Maintenance.....	37
Unwinder Maintenance	37
Ink Tray Maintenance	38
Troubleshooting.....	39
Control Panel LED.....	39
Poor Print Quality or Incorrect Printout	40
Clearing a Media Jam	42
L501 Label Printer Control Panel Menu	43
Technical Support	45

Chapter 1



When you see this icon, click for available video links!

See the full L501 Label Printer instructional video library at <http://afinialabel.com/L501info>

Setting up the Printer

In the Box



Afinia L501 Label Printer



4 Ink Cartridges
(1 each)

Will be either Dye-based or Pigment-based, depending on which type was purchased



USB Cable



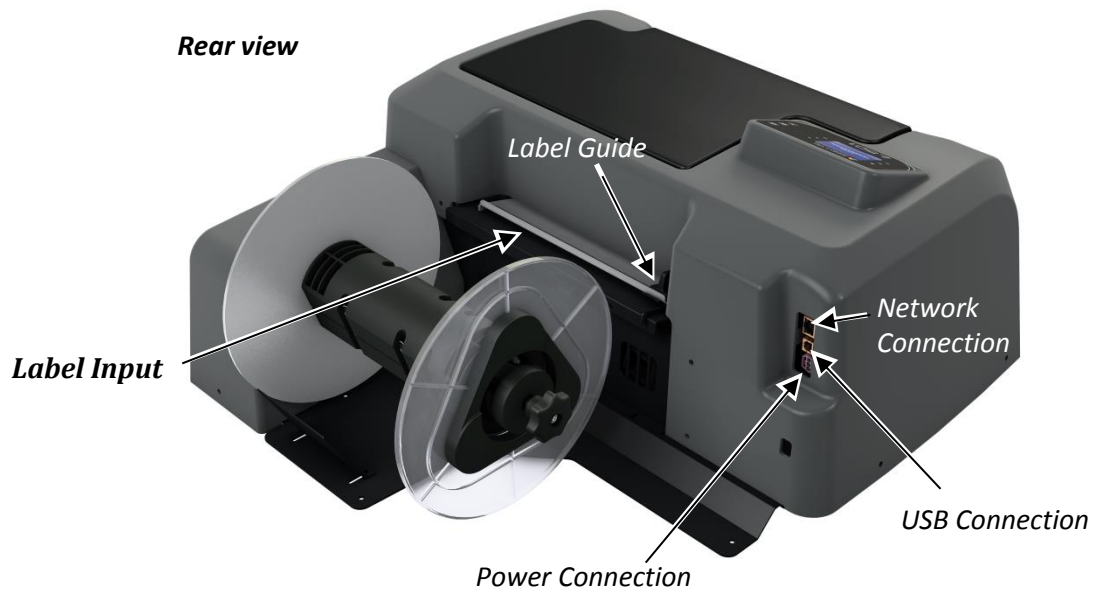
Power Supply and Cord



Quick Setup Guide

- 4 aerosol absorbing pads

Parts of the Printer





The Control Panel



The control panel includes nine buttons to help you navigate through the menu to the various controls and functions. For example:

- Press **Help** on the Control Panel.
- Press the **OK** button with **Printer Information** selected to view the printer name, model, serial number, and firmware version.

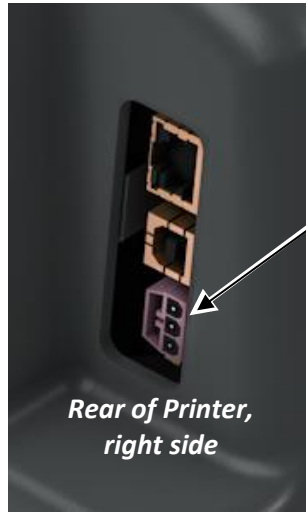


- Press  to go back one level, or
- Press  to return to the Home screen.
- Full list of control panel functions on page 17

Unpacking, Setup, and Installation

Remove Tape and Foam

- Lift top foam from the box
- Remove the Accessory box from the box
- Lift printer from box
- Remove the packaging tape from the printer cover (x2) and Ink waste tray (right)



Connect the Power Supply to the Printer



Connect Power



Press Power button on Control Panel



Set Date, Time, and Language

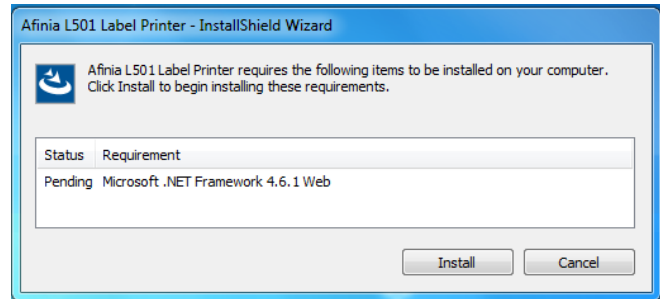
Use the Up/Down buttons to set the Date, Time, and Language. Press the **OK** button when the element shown is correct. Press **Done** when complete.

This will only need to be done the first time the printer is turned on.

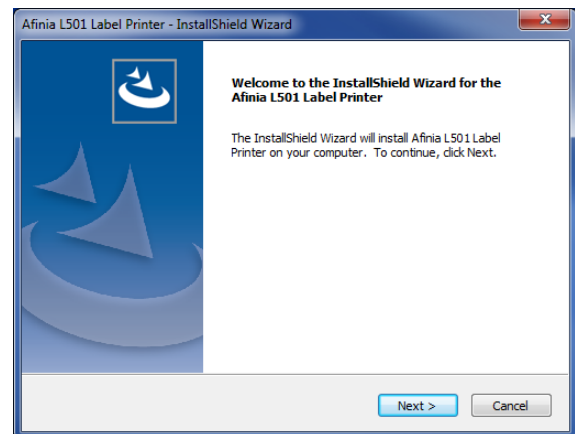
Install Printer Driver

Before connecting the printer to a PC, download and run the installer from <http://afinialabel.com/L501info>.

If an installation for **Microsoft .NET Framework 4.6.1 Web** launches, click **Install**. This is necessary for the additional software that comes with the L501 Printer. Depending on your Operating System version, you may need to re-run the L501 Installer once the .NET installation is complete.

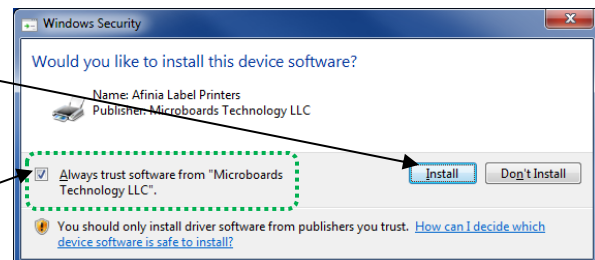


Follow the instructions in each window of the installer as they appear.



During installation, three windows may appear asking for confirmation before installing drivers. Click **Install** on each.

You can avoid the last two windows by checking the option to **Always trust software from Microboards Technology LLC** in the first window.

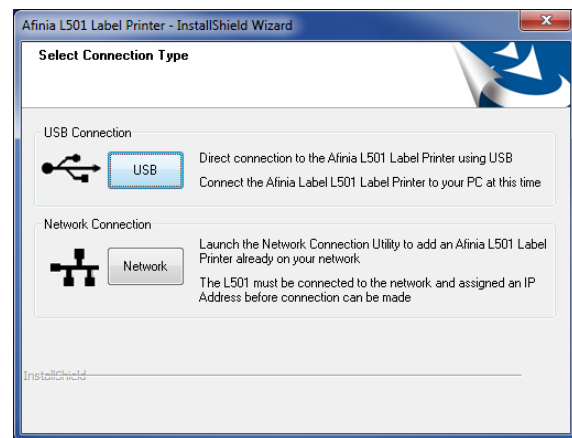


The Afinia Label L501 Label Printer can be connected directly to a PC by USB or can be set up as a network printer.

If connecting directly to the PC, click the **USB** button.

If connecting to an L501 already connected to your network, click the **Network** button.

Follow the connection instructions on the next page that match the connection type.



USB Connection



Install the Print Drivers and Toolbox *BEFORE* connecting to the computer

*Rear of Printer
(right side)*



Connect the USB to the Printer and computer



Click **Finish** to close the installer.

Network Connection

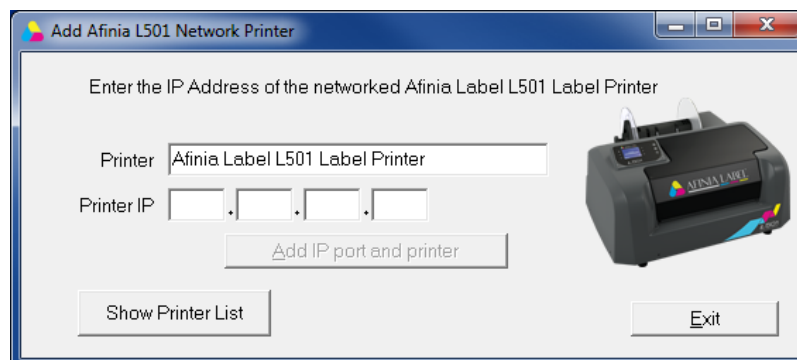


Install the Print Drivers and Toolbox on your computer *BEFORE* connecting to the network printer

The L501 Label Printer must already be connected to the network and have an IP Address before you can connect your computer to it.

When the L501 is idle, the top line of the display will alternate between showing the date and time and the IP address. For more information on network settings, please see page 19.

At the end of the installation, click the **Network** button to launch the Add Afinia L501 Network Printer utility.



Enter the IP (v4) Address of the printer in the 4 fields provided. You can only enter 3 digits in each field, but can enter fewer.

Click the **Add IP port and printer** button.

You will be told if the printer was added successfully or not.

If it was not added successfully, verify the IP address of the printer and that it is connected and on before trying again.

Close the Network Printer Utility once the printer has been added, then click **Finish** to close the installer.

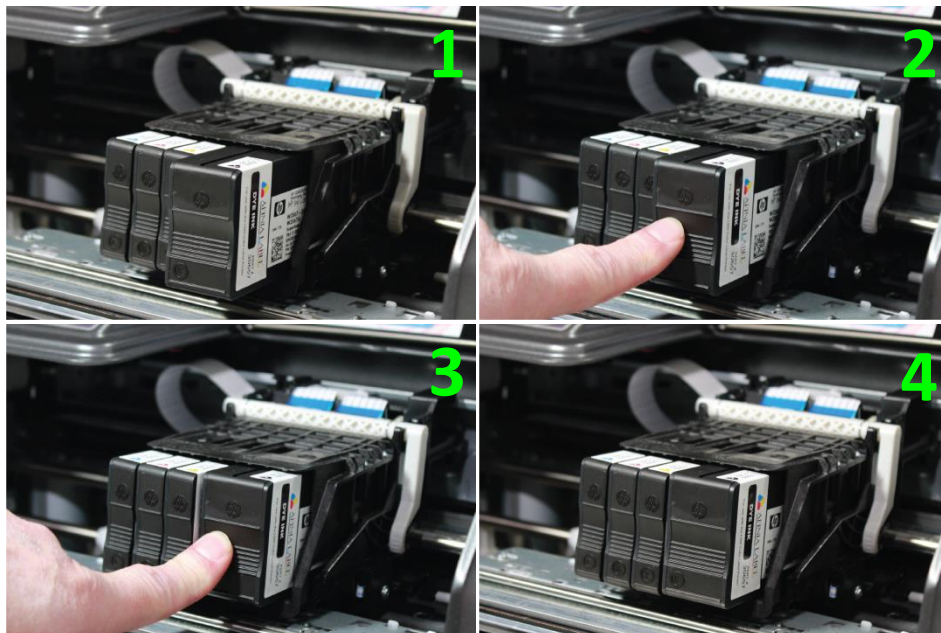
For more information on using the Add Afinia L501 Network Printer utility, please see page 32.



Install Ink Cartridges



- Open the Ink Cartridge Access Door
 - Carriage will move to the center to expose the cartridges
- Insert the Cyan, Magenta, Yellow, and Black ink cartridges into the print carriage, in that order from left to right.
 - Push each cartridge in until it clicks into place and release



- Close the Ink Cartridge Access Door

Dye or Pigment Ink Cartridges

The Afinia L501 can use either the supported Dye-based or Pigment-based ink cartridges. The Afinia Label L501 Label Printer comes with a set of Dye- or Pigment-based cartridges.

Each type must be used in separate printheads. To use a different type of ink, you will need to install a second printhead (see **Changing Printheads** on page 34).



Installing a new Printhead requires a new set of ink cartridges for priming!



Once a printhead has been primed with one type of cartridge, that printhead will not recognize the other type of cartridge!

Ink Cartridge Color and Part Numbers, by ink type

Ink Type	Ink color	Reorder Number
Dye	Cyan	30636
	Magenta	30643
	Yellow	30650
	Black	30657
Pigment	Cyan	30664
	Magenta	30671
	Yellow	30678
	Black	30685

If you will be using both ink types, you will need a second printhead. It is strongly recommended that you label each printhead accordingly.

Each new printhead comes with a full set of the specified ink cartridges

Align the Printheads

To ensure the best print quality, a Printhead Alignment is triggered the first time the printer is turned on.

To perform the alignment:

1. Loosen Unwinder knob and remove end plate
2. Turn mandrel so one of the flat surfaces faces the back of the printer
3. Move media guide to the widest position



4. Slide an 8.5" x 11" sheet of **plain, matte paper** into the label input slot until the printer pulls in the sheet
 - a. The paper **must be matte** for the alignment to complete successfully
 - b. You can also use continuous matte label stock, minimum 4" wide



5. Move media guide to side of paper
6. Press the **OK** button on the Control Panel
7. A series of patterns will be printed and used to automatically align the printheads
 - a. This will take about a minute
8. Once complete, the display should read **Alignment Successful**
 - a. If the display reads **Alignment Failed** or **Alignment Finished**, remove the paper from the printer and repeat steps 4-7 with a new sheet of paper
9. Pull the paper out the front of the printer

Chapter 2

Using the Printer

Choosing Label Media

Ensure that the label media meets the requirements for the printer:

Table 1: Media Specifications

Media Type and Dimensions		
Media type	<i>Inkjet-printable coating required</i> Gloss, semi-gloss, and matte	
Roll Width	1.5" to 8.625" (38.1 mm to 219 mm)	
Label width	1.0" to 8.625" (25.4 mm to 219 mm)	
Label length	Minimum 0.75" (19.1 mm) Maximum 48" (1.016 m)	
Label thickness	Maximum 0.01" (0.3 mm, including liner) Minimum 0.005" (0.13 mm)	
Media Handling		
Print mode	Roll to cut Roll to roll	
Roll Specifications		
Figure 1	Minimum	Maximum
I	Requires 3.0" (76.0 mm) cardboard core	
J	N/A	Maximum 8" (203.2 mm)

Figure 1: Media Roll

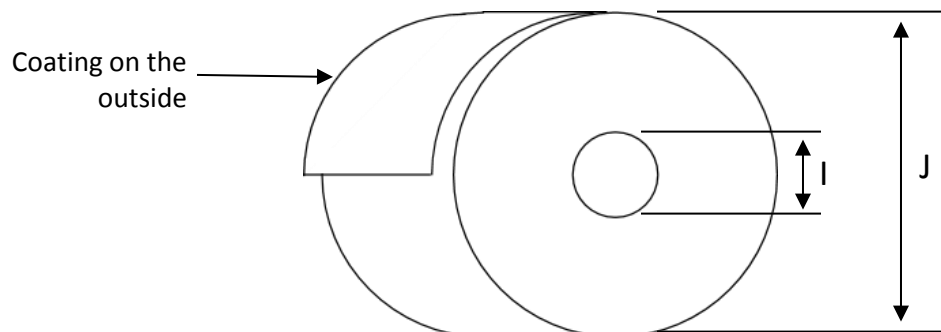
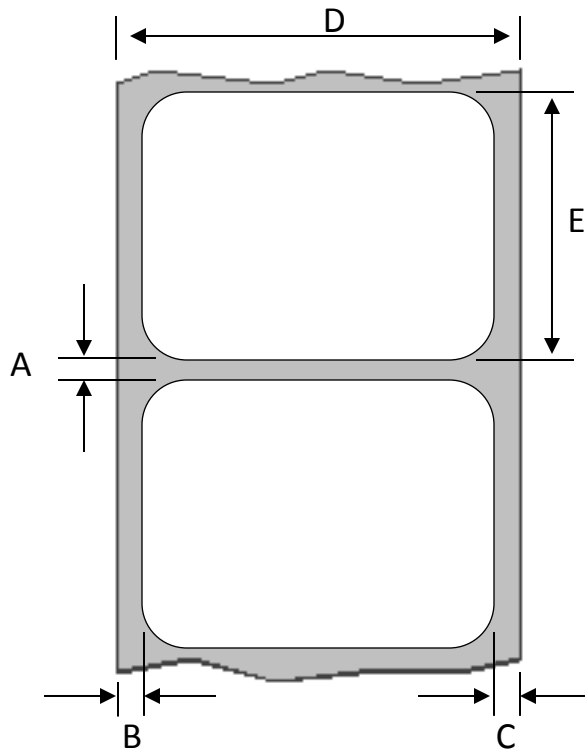


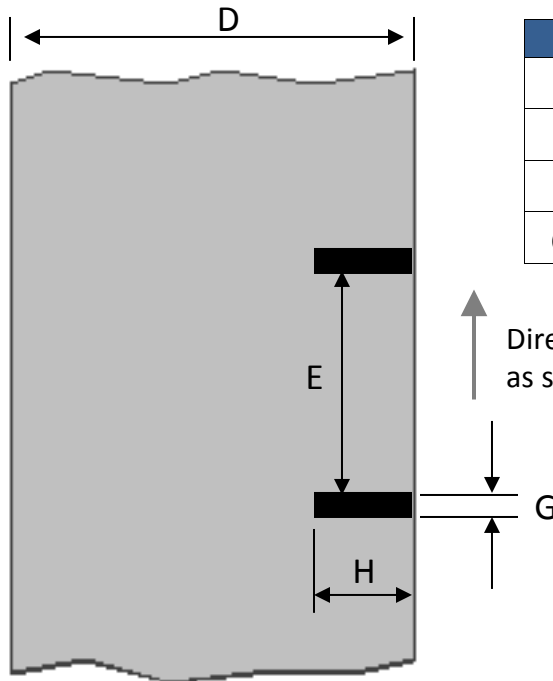
Figure 2: Gap (Transmissive) Media



	Minimum	Maximum
A	0.125" (3.0 mm)	0.3" (8.0 mm)
B	0.0	0.5" (12.7 mm)
C	0.0	N/A
D	1.5" (38.1 mm)	8.625" (219 mm)
E	0.75" (19.1 mm)	48.0" (1.219 m)

↑ Direction of travel through printer as seen from above

Figure 3: Black Mark (Reflective) Media



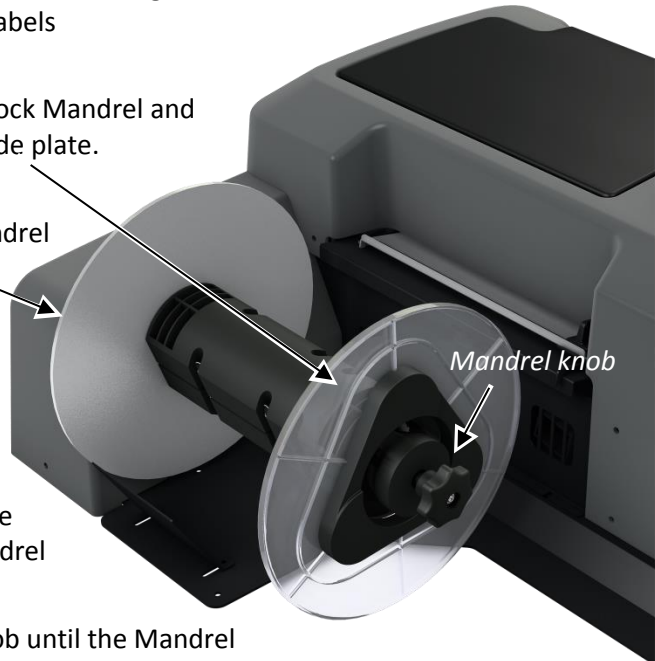
	Minimum	Maximum
D	1.5" (44.5 mm)	8.625" (219 mm)
E	0.75" (19.1 mm)	48.0" (1.219 m)
H	1.25" (31.75 mm)	8.625" (219 mm)
G	0.125" (3 mm)	0.3" (8.0 mm)

↑ Direction of travel through printer as seen from below

Loading the Printer

The Afinia Label L501 Label Printer requires a 3" ID core with the labels would face out.

1. Cut a clean leading edge on media being loaded
 - a. No partially peeled labels
 - b. No folded edges
2. Loosen the knob on the Stock Mandrel and remove the adjustable guide plate.
3. Slide the roll onto the Mandrel against the fixed guide plate, label side up
4. Pull end of label stock until the end of stock is even with the front of the cover
5. Slide the adjustable guide plate back onto the Mandrel against the stock
6. Retighten the Mandrel knob until the Mandrel holds the core in place
7. Using the black handle, slide the label guide out to at least the width of the stock
8. With the printer on, feed the stock into the input slot
 - a. Stock should be as far towards the fixed core holder side as possible
9. Feed until the printer advances the stock
10. When the stock starts loading, adjust the label guide so it is against the edge of the stock



Unloading Media



Press the **Unload** button to roll media back to the rear of the printer

Any printed labels in the printer will be cut before unloading



Using the Control Panel



Navigate through the menu by using the **Up** and **Down** buttons to highlight your choice and click **OK**.



Help Screen

Press the **Help** button

Printer Information: Displays Printer Name, Product Number, Serial Number, Service ID, and Firmware Version



Home Screen



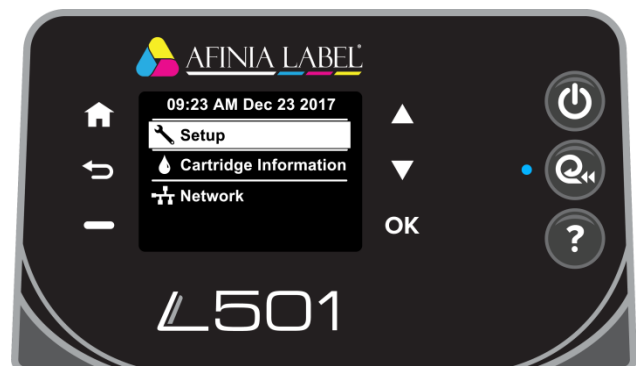
Go to **Setup** menu



Check **Cartridge Information**



Go to **Network** menu



Setup

Select **Setup** on the Home Screen and press **OK**.

Printer Settings : Preferences

With **Printer Settings** selected, press **OK** twice to open the **Preferences** menu.

Date and Time

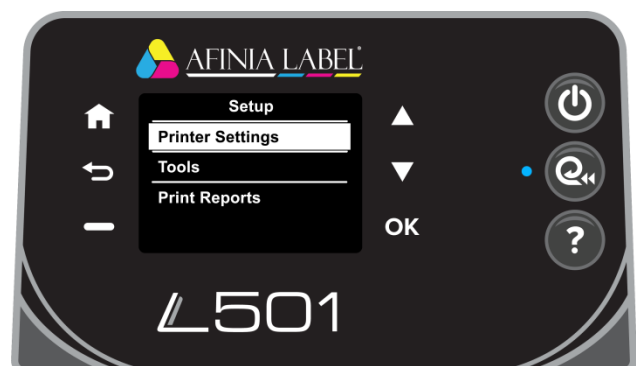
In the Date and Time menu are the options to enter the **Date**, **Time**, select the **Time Zone** from a list, and turn the **24-Hour format** and **Daylight Savings** settings **On** or **Off**.

Language

Select the language from the available list.

Country/Region

Select the Country or Region from the available list



Brightness

Change the brightness of the display; options are **Better**, **Normal**, and **Darker**.

Continuable Events

Can be set to **Press OK to Continue** or **Auto Continue**.

Press OK to Continue is the recommended setting.

Tools

Highlight **Tools** and press **OK**.

Clean Printhead *(requires minimum 4" wide continuous stock)*

Select this function to clean the printheads and print the Print Quality Report when complete. The report should show no gaps in the printed output.

Align Printheads

Alignment can be done using plain paper or continuous stock

- **Plain Paper** *(requires 1 sheet 8.5" x 11" plain paper)*
Turn the stock mandrel so the flat surface is facing the rear of the printer, then load the sheet of paper until the printer starts to feed
- **Continuous stock** *(requires minimum 4" wide matte continuous stock)*
Matte paper stock must be used when aligning the printheads. Glossy media will cause the alignment to fail. Load stock normally.

A series of patterns will be printed and scanned, with the alignment done automatically.

If the display reads **Alignment Successful**, remove the paper or stock.

If the display reads **Alignment Finished** or **Alignment Failed**, repeat the alignment. If using plain paper, a new sheet will be needed.

Print Reports

Highlight **Print Reports** and press **OK**.

Print Quality Report *(requires minimum 4" continuous stock)*

Select this function to print a grid showing the pen health of each color.

If any lines are missing in any of the colors, Clean Printheads should be run.

Network Configuration Page *(requires minimum 4" continuous stock)*

Select this function to print the Ethernet settings for the printer.



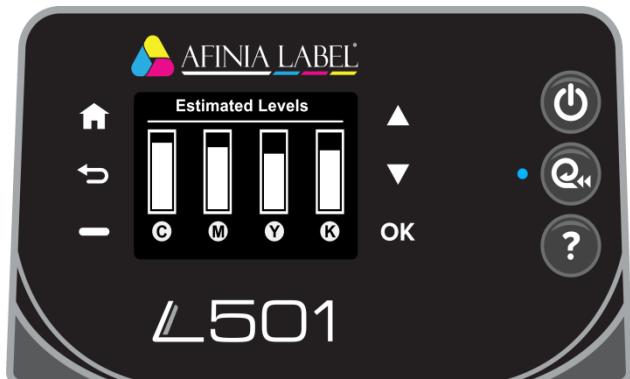
Cartridge Information

Select **Cartridge Information** on the Home Screen and press **OK**.

Estimated Levels

Press **OK** when selected to view an estimate of the ink levels.

This shows the same levels as the Afinia L501 Toolbox.



Cartridge Low Alert

Use the **Up** and **Down** buttons to set **Alert** levels to either **Automatic** or **Custom**; press **OK** when the correct option is selected. Alert levels can be set for each cartridge.

If set to **Custom**, use the **Up** and **Down** buttons to set the percentage remaining and click **OK** when each percentage is set.

Cartridge Details

Select **Cartridge Details** and press **OK**.

Use the **Up** and **Down** buttons to select the correct cartridge and press **OK**. Information on the cartridge will be displayed.




Network

Select **Network** on the Home Screen and press **OK**. These settings are only used if the L501 Label Printer is connected to your network using an Ethernet cable.

Ethernet Settings

Select **View Ethernet Details** to review or print the Ethernet settings.

Press the  button to print the information. Printing requires minimum 4" wide continuous stock.

Ethernet Settings : Advanced Settings

IP Settings


By default, the L501 Label Printer Advanced Ethernet Settings are **Automatic**. If your network uses DHCP through a Domain Name Server, you do not need to change the IP Settings.

After the printer has been connected to the network and is assigned an IP address, the IP address can be displayed using the **View Ethernet Details** menu option above.

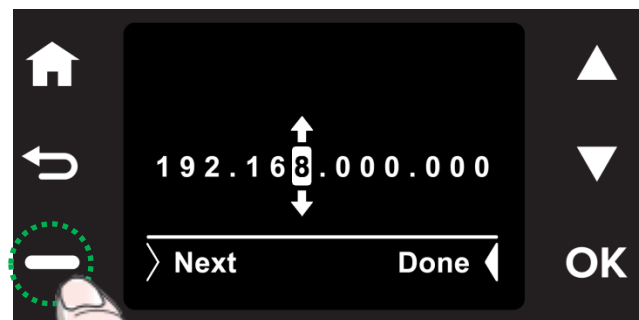
To assign a Static IP address to the printer, change the **IP Settings** to **Manual**. Enter in the **IP Address, Subnet Mask, Default Gateway, Preferred DNS Address**, and optionally enter an **Alternate DNS Address**.

If a Domain Name Server has assigned the printer an IP address, the IP address, Subnet Mask, Default Gateway, and DNS Server addresses will already be entered.

To add or change an address, use the Up and Down buttons to select each digit of the address, moving from left to right.

Press the  button when the current digit is correct to move to the next digit.

Press the **OK** button when each address is complete.




Ethernet Settings : Advanced Settings (continued)

IPv6

This option allows you to turn IPv6 addressing **On** (default) or **Off**.

Host Name and Bonjour Name

You can change the Host Name and Bonjour Name with these options.

Confirm that you want to change the name by pressing the  button when prompted.

Proxy Settings

Use this option to turn the Proxy Settings **On** or **Off** (default).

Link Speed

Select the Link Speed. Options are **Automatic** (default), **10 – Full**, **10 – Half**, **100 – Full**, and **100 – Half**.

Disable EEE

Use this option to turn the EEE (Energy Efficient Ethernet) **On** or **Off** (default).

Print Reports

Requires minimum 4” wide continuous stock.

Press the **OK** button twice to print the Network Configuration Page.

This is the same report as is printed from the Setup : Print Reports : Network Configuration Page and when selecting the Print option from the View Ethernet Details menu item.

Restore Network Settings

Use this option to restore all network settings back to the defaults.

Printing Labels

1. Select the **Print** command from your application.
2. Select the L501 printer and click the **Setup, Properties** or similar button.
3. The print settings displayed are the defaults that were set in the printer driver.
4. Change the print settings if needed.

NOTE: Ensure the media settings (e.g. label size, type) match the media loaded in the printer.

5. Print the document.

Any changes to the settings only apply to the current print job. Make the changes in the printer driver to set the default for all print jobs.



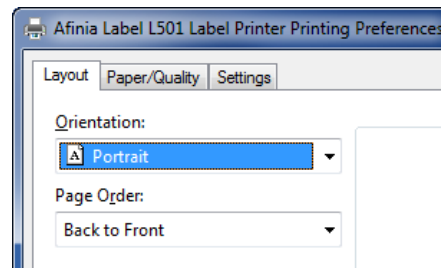
Printer Preferences

There are three main tabs in the Printer Preferences

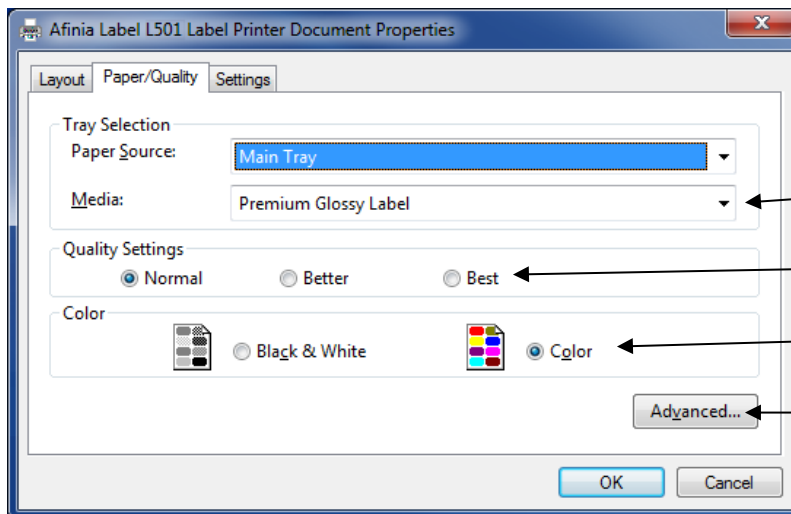
Layout

Select **Orientation** as **Portrait** or **Landscape**.

For multi-page documents, print order can be selected using **Page Order**.



Paper/Quality



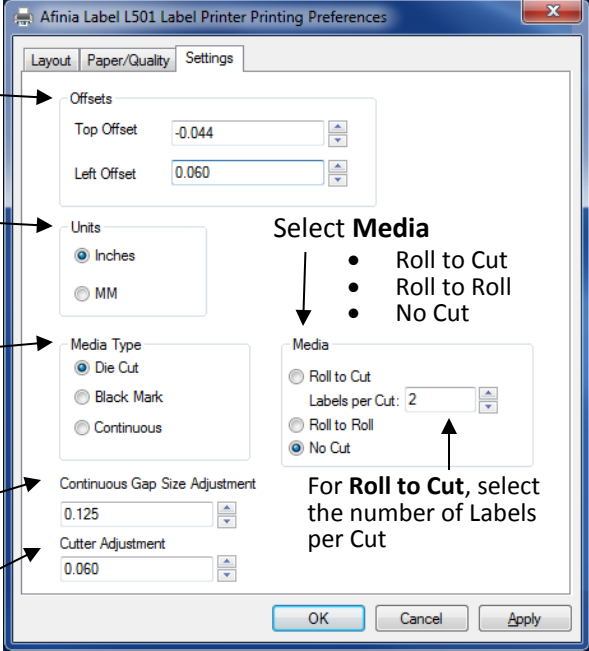
Select **Media** type

Select **Quality**

Select **Black & White** or **Color**

Select **Media** size (see page 24)

Settings



The screenshot shows the 'Afinia Label L501 Label Printer Printing Preferences' dialog box with the 'Settings' tab selected. The dialog is divided into three sections: 'Layout', 'Paper/Quality', and 'Settings'. The 'Settings' section contains the following controls:

- Offsets:** Top Offset (-0.044) and Left Offset (0.060).
- Units:** Radio buttons for Inches (selected) and MM.
- Media Type:** Radio buttons for Die Cut (selected), Black Mark, and Continuous.
- Media:** Radio buttons for Roll to Cut, Roll to Roll, and No Cut (selected). A 'Labels per Cut' spinner is set to 2.
- Continuous Gap Size Adjustment:** A spinner set to 0.125.
- Cutter Adjustment:** A spinner set to 0.060.

Annotations on the left side of the dialog provide instructions for various settings:

- Set Top and Left print offsets (see below):** Points to the Top and Left Offset fields.
- Select Units of measurement:** Points to the Units section, with a list:
 - Inches
 - Millimeters
- Select Media Type:** Points to the Media Type section, with a list:
 - Die Cut
 - Black Mark
 - Continuous
- Set Continuous Gap Size Adjustment:** Points to the Continuous Gap Size Adjustment field, with the text: 'Adds space between continuous labels'.
- Set Cutter Adjustment:** Points to the Cutter Adjustment field, with the text: 'Shifts cutting stop position up or down. Increase to move cut farther from last label printed, Decrease to move cut closer to last label printed'.

Annotations on the right side of the dialog provide instructions for the Media section:

- Select Media:** Points to the Media section, with a list:
 - Roll to Cut
 - Roll to Roll
 - No Cut
- For Roll to Cut, select the number of Labels per Cut:** Points to the Labels per Cut spinner.

Buttons at the bottom of the dialog are OK, Cancel, and Apply.



Adjusting Alignment for Printing

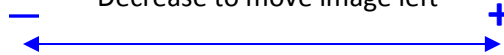


NOTE: Offsets are made looking at the printed labels right-side up, not as they are printed.

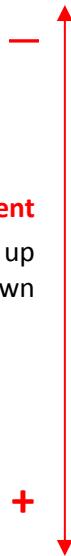
NOTE: Top Offset does not apply to Continuous media. Use the **Cutter Adjustment** to change the amount of unprinted space at the top of continuous labels.

Left Offset

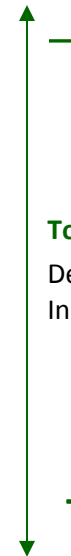
Increase to move image right
Decrease to move image left



Cutter Adjustment
Decrease to move cut up
Increase to move cut down

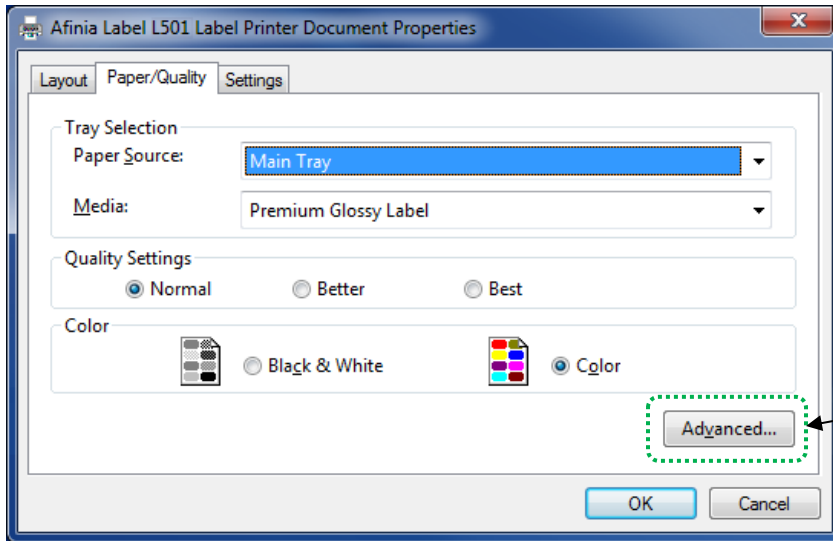


Top Offset
Decrease to move image up
Increase to move image down



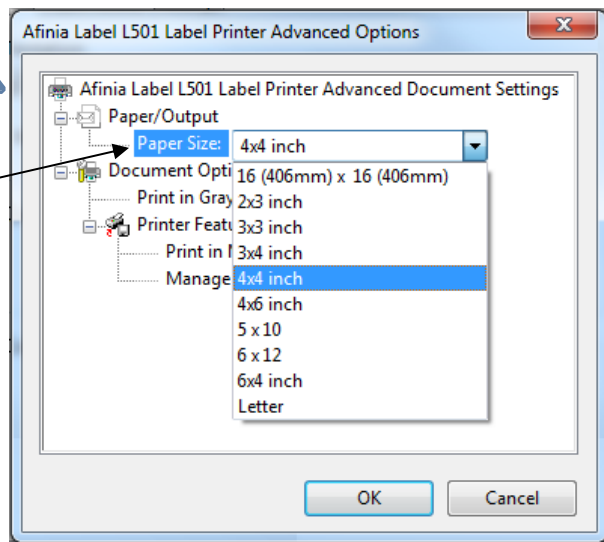
Selecting Media Size

Change the Media Size by going into the Printer Preferences.



1. Click **Advanced** on the *Layout* or *Paper/Quality* tab

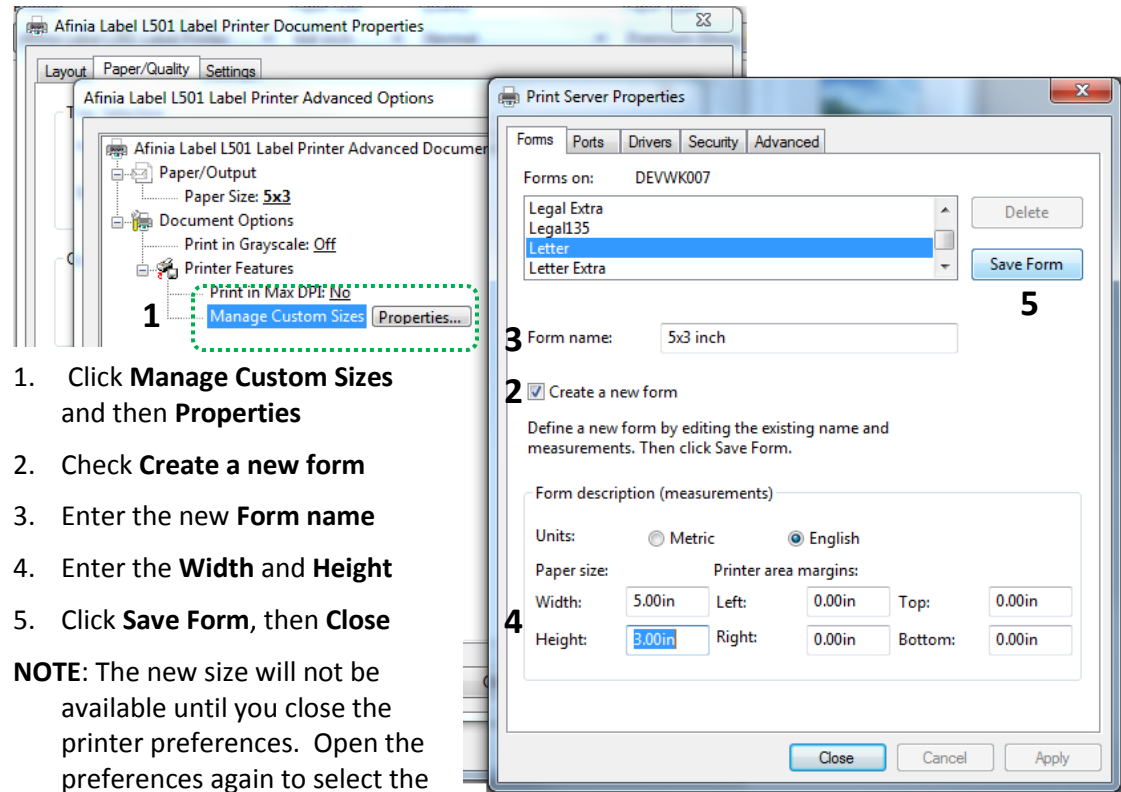
2. Select the correct entry from the **Paper Size** list and click **OK**





Creating Custom Media Sizes

From Advanced Options:

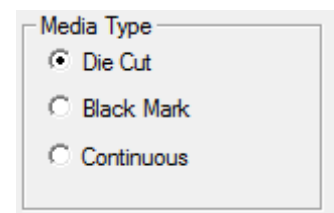


1. Click **Manage Custom Sizes** and then **Properties**
2. Check **Create a new form**
3. Enter the new **Form name**
4. Enter the **Width** and **Height**
5. Click **Save Form**, then **Close**

NOTE: The new size will not be available until you close the printer preferences. Open the preferences again to select the new size.

Selecting Media Type

Select the type of media accordingly from the **Settings** Printer Preferences tab.



Change Default Settings in Printer Driver

Make changes in the printer driver to set the default for all print jobs.


To select the default print settings that will be used for all print jobs:

1. From the Windows **Start** menu, select **Devices and Printers**.
2. Right-click the printer and select **Printing Preferences**.
3. The printing preferences contain three tabs as shown on page 21.
4. Make the changes and click **OK** to save.

It is recommended that any adjustments needed for individual print jobs be made during printing rather than changing the defaults.

Canceling a Print




1. Display reads "Printing..."
2. Press cancel 
3. Display reads "Canceling..."
4. Wait for labels to eject and stop



Out of Paper

The display will give an out of paper message if a print job is sent without media loaded. It will also be displayed at the end of roll or if the selected media type doesn't match the loaded media.

1. Insert media into input until the printer starts to load the media
2. Press **OK** to begin.

To cancel the job, press **Cancel**  instead of **OK**.



Wrong Media

If the media loaded in the printer does not match the Media Type selected in the Preferences, the printer may not print.

Media mismatches that will result in an error state are:

- **Continuous** loaded, **Die Cut** or **Black Mark** selected
- **Die Cut** loaded, **Black Mark** selected
- **Black Mark** loaded, **Die Cut** selected

Media may feed through the printer past the cutter before the error state occurs.

1. Media will unload after cutting
2. Display will show Out of Paper message
 - a. Use Out of Paper recovery steps from page 26

End of Roll

If the media runs out during printing, print will stop and the printer will enter an error state.

1. Media will unload after cutting
2. Display will show Out of Paper message
 - a. Use Out of Paper recovery steps from page 26

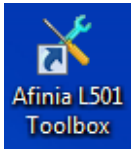
Shutting Down the Printer



To avoid damaging the printer or cartridges, always use the Control Panel power button to shut the printer down.

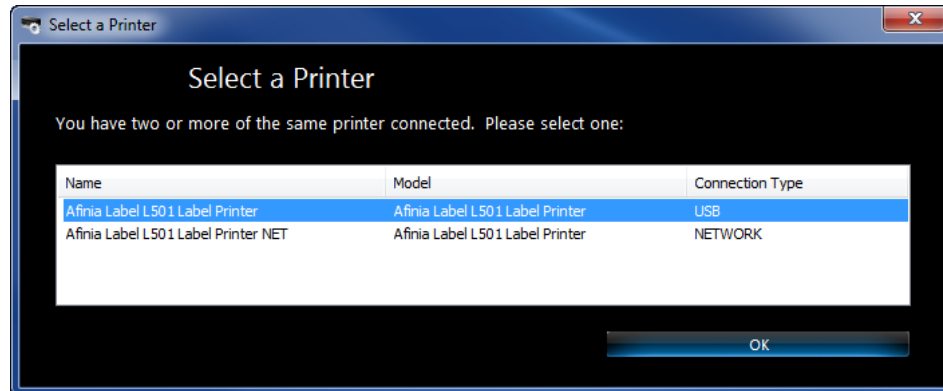


Software Tools

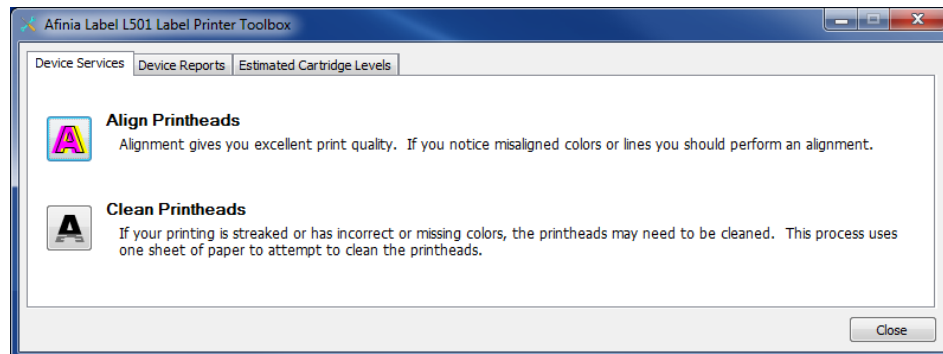


Afinia L501 Toolbox

Open the Afinia L501 Toolbox using the desktop icon for printer utilities. If you have more than one L501 connected to the computer, select the one you want to access.



Several of the utilities require continuous label stock at least 4" wide. If media is not loaded before sending the prints, an Out of Paper state will result (see page 26).



Device Services: Align Printheads (requires paper or stock: see below)

Press this button to align the printheads.

Alignment can be done using plain paper or continuous stock

- **Plain Paper** *(requires 1 sheet 8.5" x 11" plain paper)*
Turn the stock mandrel so the flat surface is facing the rear of the printer, then load the sheet of paper until the printer starts to feed
- **Continuous stock** *(requires minimum 4" wide matte continuous stock)*
Matte paper stock must be used when aligning the printheads. Glossy media will cause the alignment to fail. Load stock normally.

A series of patterns will be printed and scanned, with the alignment done automatically.

If the display reads **Alignment Successful**, remove the paper or stock.

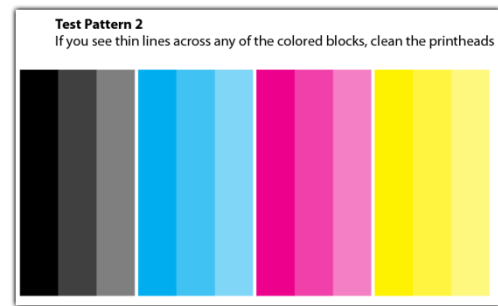
If the display reads **Alignment Finished** or **Alignment Failed**, repeat the alignment. If using plain paper, a new sheet will be needed.

Device Services: Clean Printheads
(requires minimum 4" wide continuous stock)

If the Print Quality Diagnostic Page shows horizontal gaps in Test Pattern 2, press this button to clean the printheads.

When the first cleaning round is complete, the Diagnostic Page will print again.

Examine Test Pattern 2; if the problems are cleared up, press **Done**.

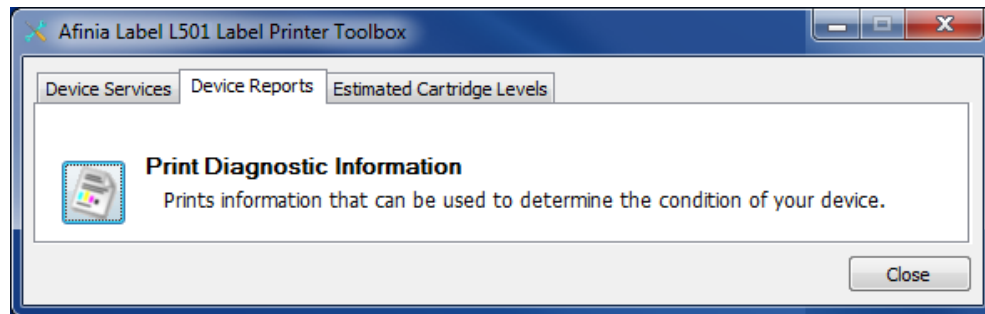


Test Pattern 2

Click **Second-level Clean** if gaps in the printed pattern are still visible.



A **Third-level Clean** is available if the Second-level Clean does not clear up the gaps in Test Pattern 2. However, this level of cleaning will use a large amount of ink.



Device Reports: Print Diagnostic Information (requires minimum 4" wide continuous stock)

Click this button to print two test patterns showing the pen alignment and health of each color.

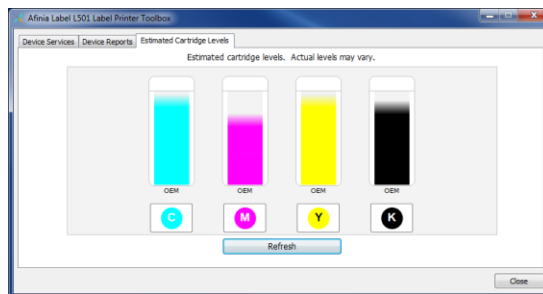
If any lines in Test Pattern 1 are not straight or disconnected, the printheads should be aligned.

If there are any horizontal white lines across the color blocks in Test Pattern 2, Clean Printheads should be run.

Estimated Cartridge Levels

This tab shows an estimate of the remaining ink in the cartridges.

Click the **Refresh** button if the toolbox has been open during printing to show the current estimated levels.





Afinia L501 Ink Cost Calculator

The Afinia Label L501 Label Printer includes an Ink Cost Calculator tool.

Unless you are monitoring the full production print job, these numbers will be estimates only; many factors could change the actual ink usage during a longer print job.

The Calculator can be used to help estimate the cost of ink for printing a specific label. This will help in estimating the cost of the job based on the number of labels to be printed.



	1	2	3	4	5
Color Cartridge Cost					
Cyan Page Cost	0.00953	0.0572	0.04957	3146.8	
Black Cartridge Cost	55				
Magenta Page Cost	0.02295	0.1377	0.11934	1307.2	
Yellow Page Cost	0.03524	0.21146	0.18327	851.2	
Black Page Cost	0.0008	0.0048	0.00684	68817.2	

Job Totals:
 Total Cost: 0.41115
 Job Total Pages: 6
 Cost per Label: 0.06853

The main window shows you:

1. Cost per cartridge
2. Cost per label per cartridge
3. Total cost per cartridge
4. Total ml used per cartridge
5. Number of labels that could be printed for each cartridge
6. Total Job Cost
7. Total Labels Printed
8. Cost per Label
9. Printer being monitored

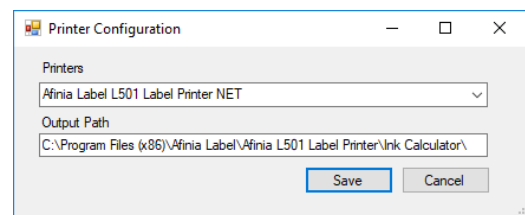
Open the Calculator before printing a number of the labels you want to estimate – a minimum of 6 labels is recommended. The more labels printed, the more accurate the results will be.

Once the job is finished printing, the ink usage and cost information will appear.

Configuration Menu : Configuration

Click the **Configuration** menu and select **Printer** from the sub-menu to set or change the printer being monitored or to change the Output directory location.

Only printers installed with the Afinia L501 drivers will appear in the Printer list; the name of the printer itself does not matter.

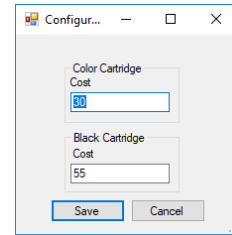


You cannot open this menu option while the printer you are monitoring is printing.

Configuration Menu : Cost

The **Cost** of the ink cartridges used by the calculator can be changed in this window.

You cannot open this menu option while the printer is printing.

***Manual Menu : Manual End Capture***

If for some reason the Calculator doesn't give you the results of a job that completed printing, click the **Manual** menu and select **Manual End Capture** to force an ink usage check. Note that the ink usage data may not be accurate.

Export Job List

Click this button to export all jobs printed while the Calculator has been running to a .csv file. This type of file can be opened in Microsoft Excel.

The export file will be created in the directory set in the **Output Path** set in the **Configuration : Printer** menu.

Show Advanced Info / Hide Advanced Info

This button will show the job data from all jobs printed since the Calculator was opened, as well as the raw ink usage data.

The button will change between Show and Hide depending on whether the data is being displayed or not.

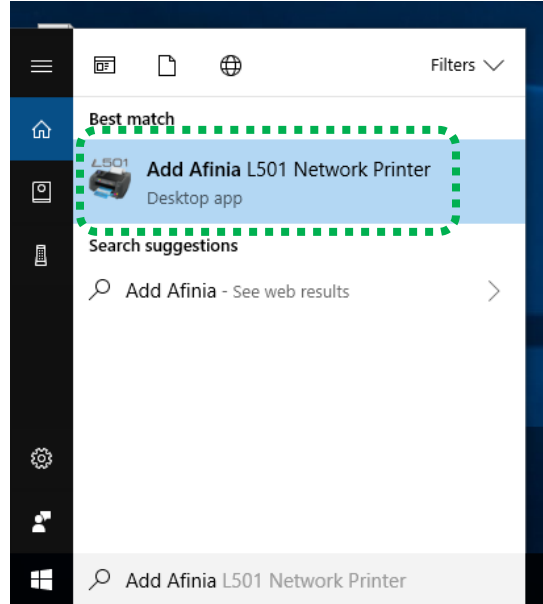


Add Afinia L501 Network Printer Utility

If you've already installed the L501 software and want to add a network L501 printer that is already on your network, use the **Add Afinia L501 Network Printer** utility to easily connect your computer to the printer. All you will need to know is the IP Address of the printer.

Type "Add Afinia" into the program search field and click the matching Desktop app.

There is also a shortcut for the utility in the Start : Afinia Label : Afinia L501 Label Printer folder.

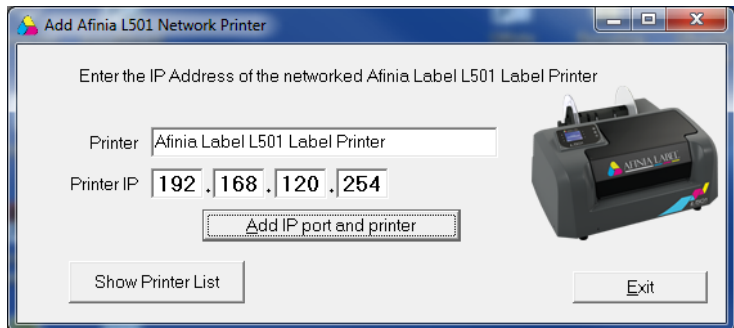


Enter the **Printer IP** address of the L501 Printer, each 3 digit group in each field. If any of the fields only need 1 or 2 digits, you do *not* need to left-pad the field with 0s.

You can change the name of the **Printer** before adding it as well.

Click the **Add IP Port and printer** button when the IP address has been entered.

The utility will let you know if the printer was successfully added or not.



If a printer by the same name already exists, the new printer will have "(Copy X)" at the end, with X being the next available copy number.

If it was not added successfully, verify the IP Address of the printer.

You can verify the printer was added by clicking the **Show Printer List** button if the list of all printers on your computer is not already open. **Refresh List** will update the list to the current printers. The latest printer added will be the last entry.

If the utility does not work due to security or access settings on your network, please contact your IT department for assistance.

Chapter 3

Printer Maintenance



Replacing an Ink Cartridge

Dye or Pigment Ink Cartridges

The Afinia L501 can use either the supported Dye-based or Pigment-based ink cartridges. However, each type must be used in separate printheads.

To use a different type of ink, you will need to install the second printhead (see **Changing Printheads** on page 34).



Installing a new Printhead requires a new set of ink cartridges for priming!



Once a printhead has been primed with one type of cartridge, that printhead will not recognize the other type of cartridge!

Only Afinia cartridges can be used!

Ink Type	Ink color	Reorder Number
Dye	Cyan	30636
	Magenta	30643
	Yellow	30650
	Black	30657
Pigment	Cyan	30664
	Magenta	30671
	Yellow	30678
	Black	30685

If you will be using both ink types, it is strongly recommended that you label each printhead accordingly.

Cartridges should be replaced when a cartridge reports being low or out of ink.

- Open the Ink Cartridge Access Door
- Press and release the cartridge that needs to be replaced; it will unlock and eject a short way
- Remove the ink cartridge
- Remove the new cartridge from the packaging
- Push in the new cartridge into the carriage until it and locks
- Close the Ink Cartridge Access Door



Changing Printheads

The printhead should be changed if you are switching between dye-based ink and pigment-based ink or if print quality issues persist after cleaning and replacing cartridges.



- Open the Ink Cartridge Access Door
- Remove ink cartridges



If you are changing from one ink type to another, it is recommended that you keep the ink cartridges in the printhead being removed. Storage of a used printhead with the cartridges removed can lower the life span of the printhead.

- Lift the grey lever on the right to release the printhead assembly and remove
- Lower replacement printhead into the carriage
- Lower the grey lever to lock printhead in place
- If the printhead is:
 - **NEW:** Install **new** ink cartridges of the type with which the printhead is to be used (Dye-based or Pigment-based) – **new cartridges must be used!**
 - **USED:** Install ink cartridges of the same type as has been previously used in the printhead
- Close the Ink Cartridge Access Door to prime the printhead



If a previously used printhead does not recognize the ink cartridges as valid and doesn't begin priming, the printhead was initially used for the other ink type.



Tip: For the best print results, run the **Toolbox Printhead Alignment** (see page 28) when you replace the Printhead.

Purchasing Printheads

Printheads can be purchased through your Reseller.

Each new printhead comes with a full set of ink cartridges as the initial priming of the Printhead requires a new set of cartridges. Be sure to order the Printhead based on the ink type you will be using.

Ink Type	Afinia Printhead Part Number
Dye	30986
Pigment	30993

Guidelines for Preventative Maintenance

Occasional maintenance to remove dust and debris is required for best performance.



Do not substitute where lint-free cloth is called for. Using paper towels or regular cloth could damage the printer.

General dust and debris removal

Tools: Small low-suction hand-held vacuum or compressed air for electronics; tweezers or needle-nose pliers

1. Turn off printer and unplug
2. Use a small low-suction hand-held vacuum for dust and debris removal
 - a. If you do not have a small low-suction hand-held vacuum, use compressed air for electronics to blow as much dust or debris from printer as possible.
3. Use tweezers or needle-nose pliers to gently remove media debris that is not removed by vacuum.



Do not use a high-suction vacuum to avoid damaging the printer.

Cutter Maintenance

Tools: #1 Phillips screwdriver; lint-free cloth; isopropyl alcohol

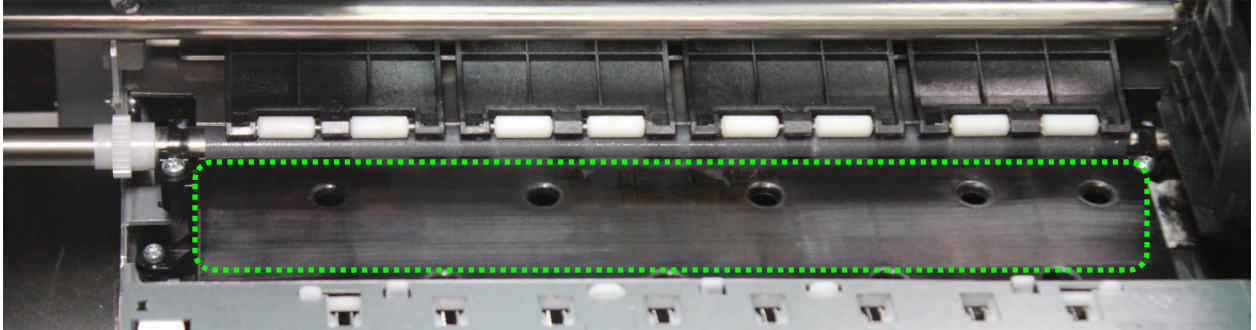
1. Turn off printer and unplug
2. Remove the two screws on the front of cutter handle
3. Remove spring from cutter axle
4. Pull cutter axle and cutting wheel out of cutter
5. Using a lint-free cloth and isopropyl alcohol, clean any adhesive or debris from wheel
 - a. Note that the axle is not fixed in the wheel and may fall out
6. Using a lint-free cloth and isopropyl alcohol, wipe any adhesive or debris from cutting edge
 - a. Located below rail cutter rests on
 - b. Move the position of cutter to clean entire cutting edge
7. Replace wheel in cutter
8. Replace spring on cutting wheel axle
9. Replace the handle
 - a. Do not over-tighten the two screws

Print Path Maintenance

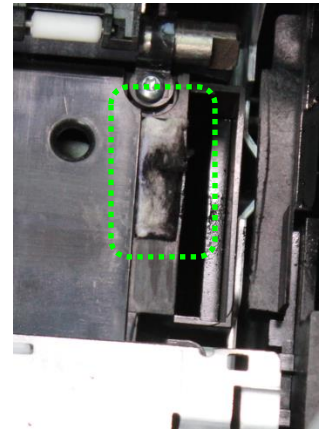
With use, ink may accumulate on the plate below the print path.

Tools: Lint-free cloth; isopropyl alcohol

1. Turn off printer and unplug
2. Open Cartridge Access door
3. Clean the plate below the print path with a lint-free cloth dampened with alcohol



4. Clean ink pad to right of print plate
 - a. Replace if necessary (see Troubleshooting)
5. Close Cartridge Access door

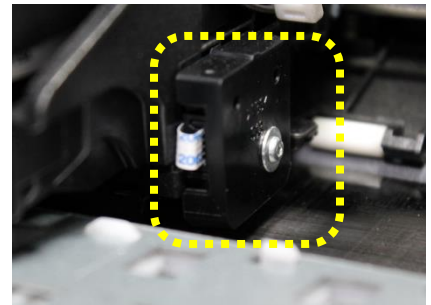


Print Carriage Sensor Maintenance

The sensor is on the right side of the print carriage

Tools: Compressed air for electronics; lint-free cloth; isopropyl alcohol

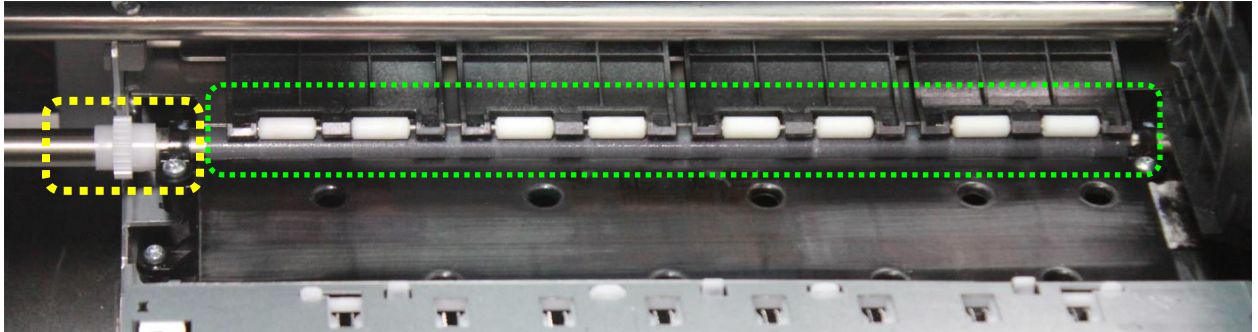
1. Open Cartridge Access door
2. Blow dust or debris from bottom of sensor (circled in yellow)
3. For more cleaning, gently wipe bottom of sensor with a lint-free cloth dampened with isopropyl alcohol
4. Close Cartridge Access door



Pinch Roller Maintenance

Tools: Lint-free cloth; isopropyl alcohol

1. Close Cartridge Access door
2. Turn off and unplug printer
3. Open Cartridge Access door
4. Clean each white pinch roller (outlined in green) using lint-free cloth dampened with alcohol

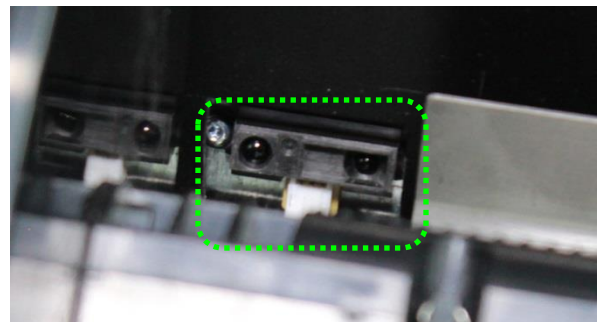


5. Clean grit roller underneath the pinch rollers by manually turning the white gear (outlined in yellow) to the left of the print plate
6. Close Cartridge Access door
7. Plug in and turn on printer

Unwinder Maintenance

Tools: Lint-free cloth; isopropyl alcohol; compressed air for electronics

1. Remove loaded stock
2. Turn off and unplug printer
3. Using lint-free cloth and isopropyl alcohol, remove any adhesive residue on the mandrel or end caps
4. Using compressed air, blow dust or debris from sensor
5. Plug in and turn on printer



Ink Tray Maintenance

With use, the waste Ink Tray pad may become saturated and need to be cleaned.

Tools: Nitrile or latex gloves; paper towels, plastic spoon

1. Turn off printer
2. Remove tray from right side of printer
3. Using the paper towels, absorb as much ink from the tray as possible
4. For more solid ink deposits, scoop out of tray with plastic spoon
5. If pad in tray will not clean easily, contact Technical Support to purchase a new pad
6. **Replace the tray!**

Printing without the tray in place can result in ink leaks

7. Turn printer back on



Chapter 4

Troubleshooting



See the full L501 Label Printer [Troubleshooting video](#) here

Control Panel LED

The LED on the control panel indicates a number of printer states:

LED	Display	
Off	Off	1. Power cable not plugged in 2. Plugged in, but power button not pressed
Always On	On	Printer on, stock loaded (ready)
Blink	On	No stock in paper path
Fast Blink	On	Paper unloaded but paper sensor blocked. Remove stock from paper path
Pulsing	On	Printing

If an error message appears on the Control Panel, follow the instruction to clear the error.

Poor Print Quality or Incorrect Printout

Print Problem	Possible Cause	Resolution
Colors not aligned	Printhead alignment needed	1. Toolbox : Device Services : Align Printheads
Low or poor print quality	Printhead cleaning needed	1. Toolbox : Device Services : Clean Printheads 2. Run Second Level Clean if needed
	Printhead needs to be cleaned or replaced	1. Toolbox : Device Report : Print Diagnostic Information 2. If report shows missing lines, Toolbox : Device Services : Clean Printheads 3. Print Diagnostic Information again; if lines still missing, replace
	Quality setting too low for your artwork	Printer Preferences : Change Quality setting to Better or Best
Colors not correct	Printhead cleaning needed	1. Toolbox : Device Services : Clean Printheads 2. Run Second Level Clean if needed
	Wrong label stock selected	Printer Preferences : Check the Media selected before printing
Ink not drying or smearing	Wrong media coating	Only use media with inkjet-compatible coating
Print not correct size	Print settings incorrect	1. Verify label size selected is correct 2. Verify scaling is not set when printing
	Label and Image not same size	Resize image or load correct label size
Print not aligned to label	Offsets not correct	Printer Preferences : Adjust the Top or Left Offsets as needed
Print alignment is shifting during printing	Label is not moving in straight path	1. Verify label stock is inserted correctly 2. Verify adjustable core holder is secure 3. Verify core holders are tight against sides of core 4. Verify Label Guide is in correct position 5. Verify input roll is wound straight
Label not stopping in correct cut position	Cutter Offset not correct	Printer Preferences : Adjust the Cutter Offset as needed

(continued...)

Print Problem	Possible Cause	Resolution
Length of two labels fed through blank, cuts, media unloads; LED blinking	Wrong Media Type selected in Settings	Load correct media type and press OK , or press Cancel .
Printer not printing	No paper in printer when job is sent	Cancel job or load media and press OK <i>If using Die Cut or Black Mark media, the first label will be left blank</i>
Printer stops printing mid-job	End of Roll	Cancel job or load media and press OK <i>If using Die Cut or Black Mark media, the first label will be left blank</i>
	Media jam	Clear media jam (see page 42)
	PC disconnect	Verify PC is connected to printer and on
Media does not load	Printer still initializing	Wait until green LED is flashing slowly
	Media Guide in the way	Move the media guide to the left and reload
	Printheads being cleaned	Remove media and wait until the cleaning cycle completes. Retry loading

Clearing a Media Jam

If the media jams, follow these steps to clear the printer:

1. Turn off printer from control panel and unplug power cord
2. Open Cartridge Access door
3. Cut any media past the print zone and pull slowly out through front
4. Remove remaining media by gently pulling stock back toward unwinder
5. Close Cartridge Access door
6. Plug in power cord and turn on printer

L501 Label Printer Control Panel Menu

1. Setup
 - a. Printer Settings
 - i. Preferences
 1. Date and Time
 - a. Date
 - i. *Enter Date*
 - b. Time
 - i. *Enter Time*
 - c. Time Zone
 - i. *Select from List*
 - d. 24-Hour Format
 - i. *On*
 - ii. **Off**
 - e. Daylight Savings
 - i. **On**
 - ii. *Off*
 2. Language
 - a. *Select from list*
 3. Country/Region
 - a. *Select from list*
 4. Brightness
 - a. *Brighter*
 - b. **Normal**
 - c. *Darker*
 5. Continuable Events
 - a. **Press OK to Continue**
 - b. *Auto Continue*
 6. Store Anonymous Usage Information
 - a. **On**
 - b. *Off*
 - b. Tools
 - i. Clean Printhead ¹
 1. *Requires minimum 4" wide continuous stock*
 - ii. Align Printer
 1. *Requires minimum 4" wide **matte** continuous stock*
 - c. Print Reports
 - i. Print Quality Report ¹
 1. *Requires minimum 4" wide continuous stock*
 - ii. Network Configuration Page ²
 1. *Requires minimum 4" wide continuous stock*
2. Cartridge Information
 - a. Estimated Levels
 - i. Graphic display of cartridge levels
 - b. Cartridge Low Alert (per cartridge)
 - i. **Automatic**
 - ii. *Set Custom Level*
 1. *Set % for alert for each cartridge*
 - c. Cartridge Details
 - i. *Select the cartridge to view*

Key

- User inputs are in *italics*.
- Default settings are in **bold**.
- Media needed is in *blue*.

(continued...)

3. Network

a. Ethernet Settings

i. View Ethernet Details ²

1. Can View or Print

a. Print requires minimum 4" wide continuous stock

ii. Advanced Settings

1. IP Settings

a. Automatic

b. Manual (Static)

i. IP Address

1. Enter IP Address

ii. Subnet Mask

1. Enter Subnet Mask

iii. Default Gateway

1. Enter Default Gateway

iv. DNS Address

1. Preferred

a. Enter Address

2. Alternate (optional)

a. Enter Address

2. IPv6

a. On

b. Off

3. Host Name

a. Enter Name

4. Bonjour Name

a. Enter Name

5. Proxy Settings

a. On

b. Off

6. Link Speed

a. Automatic

b. 10 – Full

c. 10 – Half

d. 100 – Full

e. 100 – Half

7. Disable EEE

a. On

b. Off

b. Print Reports

i. Configuration Page ²

1. Requires minimum 4" wide continuous stock

c. Restore Network Settings

1 – Clean Printhead will print the Print Quality Report when complete

2 – These three menu items print the same Network Configuration Report

Technical Support

For technical questions or support issues, contact Afinia Label Technical Support:

PH: 952-279-2643

support@afinia.com

www.afinialabel.com/support

Please have the Serial Number of your Afinia Label L501 Label Printer available when contacting Technical Support.

Date of Purchase: _____

Place Purchased: _____

Serial Number: _____

(Located on back of Printer)